

**SAMSON CREE NATION – MATRIX SOLUTIONS INC.
PARTNERSHIP**

ABORIGINAL CONSTRUCTION MONITORING

WEEKLY REPORT

SPREAD 2

NOVEMBER 13TH - NOVEMBER 17TH

1. PURPOSE OF THIS REPORT

The report is a weekly summary of the daily reports submitted by the Aboriginal Monitors that are working on spread two. The social and cultural findings have been tabulated with locations and mitigation measures below. A summary of the construction activities has been summarized for November 13th – November 17th, 2018.

Social and Cultural Features

Field Observation	# of occurrences	Description and Mitigation Measures	Mitigation Status	Further Action Required (Yes/No)
Traditional Use Area (hunting, fishing, gathering, trapping)	No Occurrence			
Rock Formations (rocks of significance, tipi rings, etc.)	No Occurrence			
Artifacts	No Occurrence			
Bones	No Occurrence			
Potential Gravesites	No Occurrence			

Environmental Features

Field Observation	# of occurrences	Description and Mitigation Measures	Mitigation Status	Further Action Required (Yes/No)
Medicinal or Cultural Plants	No Occurrence			
Aquatic Life	No Occurrence			
Animal Observations or Burrows	No Occurrence			

Bird Nests	No Occurrence			
Trees (Red Willow)	No Occurrence			
Wetlands	No Occurrence			
Watercourse Crossing	No Occurrence			

Additional Observations and Summary of Activities or Concerns

Attended daily safety meetings and discussed daily scopes each morning with the Contractor Liaison Dean Pooyak, and/or the Senior Construction monitor Drayton Kasokeo.

Weekly activities included spot-checking km: 172-179,187,188,190-193,195,196,197,199-202,209-211,213,214,221,222,223,242,245,247,248,250-253,257,259,262,265,266; and shoofly:104,106,107,109,114-117,121,123-127,132,133,134,139-143,155-161,163,164,166,168,170.

On November 13, the daily safety theme was to be cautious of wildlife on the road, as the sun is rising later. The weather forecast was sunny. At SF 104, crews were putting back the natural grade. At SF 106, the tie-in backfill crew were finishing the tie-in ditch and bell hole between km 175+760 to 930. At SF 107, side booms were being dismantled and then hauled to a different location. At SF 109, hydro vac trucks were cleaning ice from the tie-in ditch. At SF 113, excavator was backfilling, and dozer was waiting for hoe to pack on the east side. At SF 116, dozers were breaking up clay for the tie-in backfill crew. At SF 117, backfill crew were working from km 192+970 to 080. At SF 141, the bore crew and tie-in weld was observed. At SF 156, track hoe was digging in the ditch, crews were crossing equipment, ditch was crumbed, and a section was lowered in. At SF 157, the ditching wheel was monitored. At SF 164, bore crew, equipment crossing and flaggers were in place. At SF 168, poor boy crew was welding on the mainline. At SF 170, piker was offloading materials and bore crew was at work.

November 14, the daily safety theme was lighting, working in sufficient light makes work tasks more productive. The weather forecast was partly cloudy. At SF 121, track hoe and dozer were moving dirt, booms were moved into bore section onto rollers, and the hydro vac was on location. At SF 125, 126, 132, and 141, the tie-in crew was at work. At SF 131, tie-in complete and ready to be shaded and backfilled by the clean up crew, and excavator was plugging out the mainline ditch for tie-in. At SF 132, excavator was digging the tie-in ditch from the bore stub to the mainline ditch, and picker was offloading materials. At SF 133, the tie-in crew were welding a stub onto bore stub, and the excavator was digging the tie-in ditch on the west side. At SF 134, excavators were digging the tie-in ditch. At SF 139, tie-in crew were digging the ditch. At SF 140, the tie-in crew was doing the final tie-in on the west side. At SF 141, track hoe and dozer were moving dirt. At SF 142, track hoe was digging out the tie-in section, hydro vac was day lighting hotlines, and welders were welding tie-in above the ground. At SF 157, track hoe was digging the bell hole and crew was lowering in a section. At SF 164, excavator was backfilling on the west side.

November 15, the daily safety theme the mentorship, there will be times when individuals will need help on the job site. The weather forecast was light rain. At SF 106, crews were cleaning equipment, track hoes and dozer were moving dirt, dozer was levelling dirt and crew was filling hydro vac holes. At SF 107, picker was loading plants, dozer was moving dirt, grader was grading, and crew was loading equipment. At SF 109, dozer and track hoe was moving dirt, and mechanic was servicing equipment. At

SF 114, crew was shading pipe, dozer and track hoe was moving dirt, and gravel trucks were hauling sand. At SF 123, bore was being pulled, and back fill tie in was taking place. At SF124, tie-in backfill and dozer and track hoe was moving dirt. At SF 127, coding crew was coding pipe, and tie-in was noted. At SF 157, mainline backfill crew were working behind the lowering in crew. The mainline ditching crew was working between SF 158 to 160 as they dug the mainline ditch. At SF 163, the coating crew was monitored.

November 16, the safety theme was changing weather conditions, be careful on the roads. The weather forecast was windy. At SF 106, clean up crew were noted. At SF 114, excavator was pulling soil at tie-in ditch, and tie-in backfill crew were backfilling around TIENE energy line. At SF 115, 124 and 125, tie-in backfill was noted. At SF 126, excavator was backfilling and dozer was pushing material for the excavator. At SF 155, crews were crossing equipment. At SF 160, mechanic, meridian survey, lowering in crew, and backfill crew was shading pipe. At 161, ditching crew, mechanic was servicing equipment and track hoes were digging the ditch. At SF 166, mainline coding crew and crews were pre-jeeeping tie-in sections.

November 17, the safety theme was open ditches – access and egress. The weather forecast was windy and overcast. At SF 170, bore crew and equipment crossing. At SF 168, mainline coding crew were on location. At SF 161, mechanic was servicing the ditching wheel, track hoes were digging the ditch, dozer was levelling the ROW, and crews were prepping for concrete coating on the pipe for creek section. At SF 160, crew was crossing equipment, backfill crew was monitored, meridian survey was onsite, lowering crew and pre-jeeeping of pipe were taking place. At SF 143, hydro vac was slot digging for the SaskTel line crossing, and tie-in crew was working on the north side. At SF 141, tie in ditch was being dug on the east side of Eagle Creek. At SF 139, tie-in backfill crew were backfilling tie-ins after they passed x-ray, coated and surveyed. Also, excavator was digging the tie-in ditch to the mainline; they were welding on a section of the mainline onto the bore stub. At SF 134, 3-joint stub was being welded in the ditch. At SF 133, tie-in crew was finalling out, and excavators and dozers were cleaning up spill on ROW levelling the subsoil. At SF 127, final tie-ins are competed, backfill to proceed afterwards. At SF 126, dozers and excavators were backfilling the ditch. At SF 125, backfilling was noted. At SF 124, excavator was moving subsoil and loading rock truck, dozer was pushing soil, and welders were welding corks onto dozer. At SF 121, excavators were doing some repairs in the ditch, and dozer was pushing the spill pile through the wetland.

The location of these features was documented and photos were collected (see below). No additional cultural or environmental features were observed within the scanned areas.

Photos of Sites Visited & Topics Discussed This Week



Excavator and dozer spreading clay - km 174+740 – Nov 13, 2018



Excavator shading mainline - km 192+740 – Nov 13, 2018



Digging ditch – km 245+720 – Nov 13, 2018



Welding tie-in– km 221+890 – Nov 13, 2018



Excavator shading pipe for backfill – km 190+100 – Nov 13, 2018



Clean up crew– km 172+525 – Nov 13, 2018



Final tie-in – SF 140 – Nov 14, 2018



Excavator digging tie-in ditch – SF 132 – Nov 14, 2018



Crossing equipment under power lines – Km209+800 – Nov 14, 2018



Digging tie-in section – km 223+675 – Nov 14, 2018



Tie-in under mainline – km 200+900 – Nov 14, 2018



Dozer and excavator pushing dirt –SF 121– Nov 14, 2018



Mechanical clean up crew – km 176+350 – Nov 15, 2018



Dozer levelling – 197+450 – Nov 15, 2018



Cleaning equipment and moving dirt – km 176+400 – Nov 15, 2018



Shading pipe – km 187+700 – Nov 15, 2018



Wheel ditcher digging mainline ditch– km 251+700– Nov 15, 2018



Dozer track packing mainline – km 248+200 – Nov 15, 2018



Bore crew – SF 170 – Nov 16, 2018



Lowering in at Heritage area – km 252+500 – Nov 16, 2018



Servicing ditching wheel – km 254+100 – Nov 16, 2018



Digging ditch – km 254+700 – Nov 16, 2018



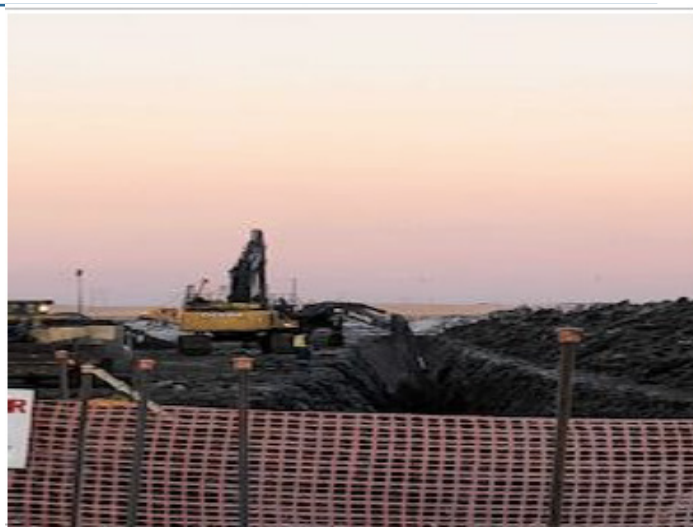
Backfilling around TIENE line crossing – km 187+612 – Nov 16, 2018



Tie-in backfill crew shading – SF 168 – Nov 16, 2018



Filling tie-in open ditch – km 201+099 – Nov 17, 2018



Excavator cleaning sluff in for tie-in – km 196+000– Nov 17, 2018



Hydro vac slot digging the line crossing - km 224+914 – Nov 17, 2018



Excavator digging tie-in – km 221+133 – Nov 17, 2018

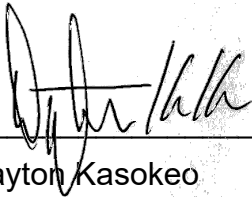


Backfill – km 252+270 – Nov 17, 2018



Prepping concrete coding – km 254+700 – Nov 17, 2018

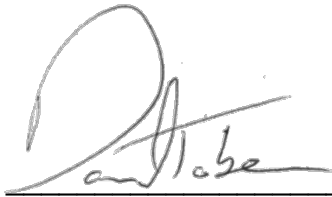
APPROVALS



Drayton Kasokeo
Senior Construction Monitor

November 22, 2018

Date



Daniel Tober
Senior Environmental Scientist

November 22, 2018

Date